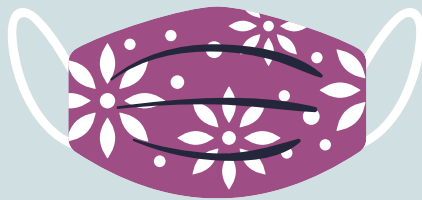


SAFELY HANDLING FACE COVERINGS

Wear your mask while doing your tasks!

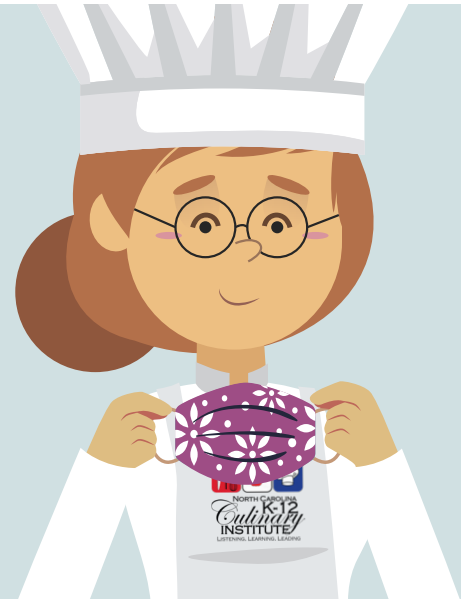


Disposable Mask



Reusable Cloth Mask

Select an approved mask.



Handle the clean, dry face covering by the ear loops, ties, or bands.



Secure in place over your nose, chin, and sides of face so it does not have any gaps.



Wash cloth face coverings after wearing with regular laundry detergent on the hottest water setting for the fabric.

Dry in a hot air dryer.



PUBLIC SCHOOLS OF NORTH CAROLINA
State Board of Education | Department of Public Instruction

www.childnutrition.ncpublicschools.gov
This institution is an equal opportunity provider.

How to wear:

- Wash your hands before putting on and after removing the mask. Scrub with soap and water for 20 seconds, rinse, then dry with a disposable towel. Use 60% ethyl alcohol hand sanitizer, if handwashing facilities are unavailable.
- Select an approved mask, preferably one with at least two or more layers of washable, breathable fabric that fits snugly against the sides of your face. Do not use a mask with holes, tears, exhalation valves or vents.
- Handle the clean, dry face covering by the ear loops, ties, or bands; secure in place over your nose, chin, and sides of face so it does not have any gaps.
- If you wear glasses, find a mask which fits closely over your nose or one having a nose wire, which will limit your glasses fogging over.
- Do not touch the mask while wearing it.
- When you remove the mask, only touch the ear loops or ties. If it is a reusable mask, fold the outside edges together and place it in storage until it can be washed. Wash your hands immediately after removing the mask.
- If a face covering effectively covers all facial hair on your chin and neck and prevents it from dropping into food, a separate beard restraint is not required.
- Never share or lend your mask.

When to change/discard:

- Change when the mask becomes wet or soiled.
- Discard when the mask is unable to securely cover the nose, chin and sides of the face or when it has holes or tears.

How to clean cloth face coverings:

- Store ready to wash cloth face coverings in a bag or bin separately from other linens.
- Wash used cloth face coverings prior to wearing again.
- Wash masks with regular laundry detergent on the hottest water setting for the fabric.
- Dry in a hot air dryer.
- No laundry facilities? Follow handwashing and air-dry procedures:
 - › Hand wash/scrub cloth face covering in laundry detergent and hot water.
 - › Scrub for 20 seconds and rinse completely.
 - › Lay flat to dry – time in the sunshine!

